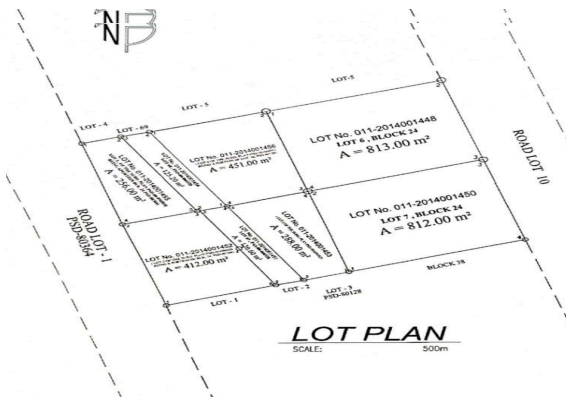


**FOR SALE**

**PRIME COMMERCIAL LOT**  
IDEAL FOR MIXED-USE DEVELOPMENT  
Brgy. Santolan, Pasig City



**LAND AREA**

3,287.80 Square meters

**LOT FEATURES**

Highly visible frontage. Rectangular-shaped lot with flat terrain. Lot perimeter is fenced with existing property caretaker.

**LOCATION**

The property is located at the service road of Felix Avenue, Santolan, Pasig City. Highly commercial and surrounded by residential and retail developments.

**LAND CLASSIFICATION**

Commercial/ Residential

**PRICE**

P120,000.00 per sqm

FOR MORE  
INFORMATION  
PLEASE  
CONTACT

Raymond V. Velasquez  
+63 917 800 7038  
rvelasquez@velray.ph

Reynaldo Geronimo  
+63 917 712 1108  
rgeronimo@velray.ph

FOR SALE

PRIME COMMERCIAL LOT

IDEAL FOR MIXED-USE DEVELOPMENT

Brgy. Santolan, Pasig City



Major Points of Interest

STA. LUCIA MALL	Mall	1.7 Kilometers
ROBINSONS METRO EAST	Mall	2.1 Kilometers
PASIG DOCTORS MEDICAL CENTER	Hospital	2.0 Kilometers
ST. ANTHONY MEDICAL CENTER	Hospital	2.4 Kilometers
ICCT COLLEGES	Institution	1.7 Kilometers
MARIKINA SPORTS PARK	Recreation	4.2 Kilometers

FOR MORE  
INFORMATION  
PLEASE  
CONTACT

Raymond V. Velasquez  
+63 917 800 7038  
rvelasquez@velray.ph

Reynaldo Geronimo  
+63 917 712 1108  
rgeronimo@velray.ph